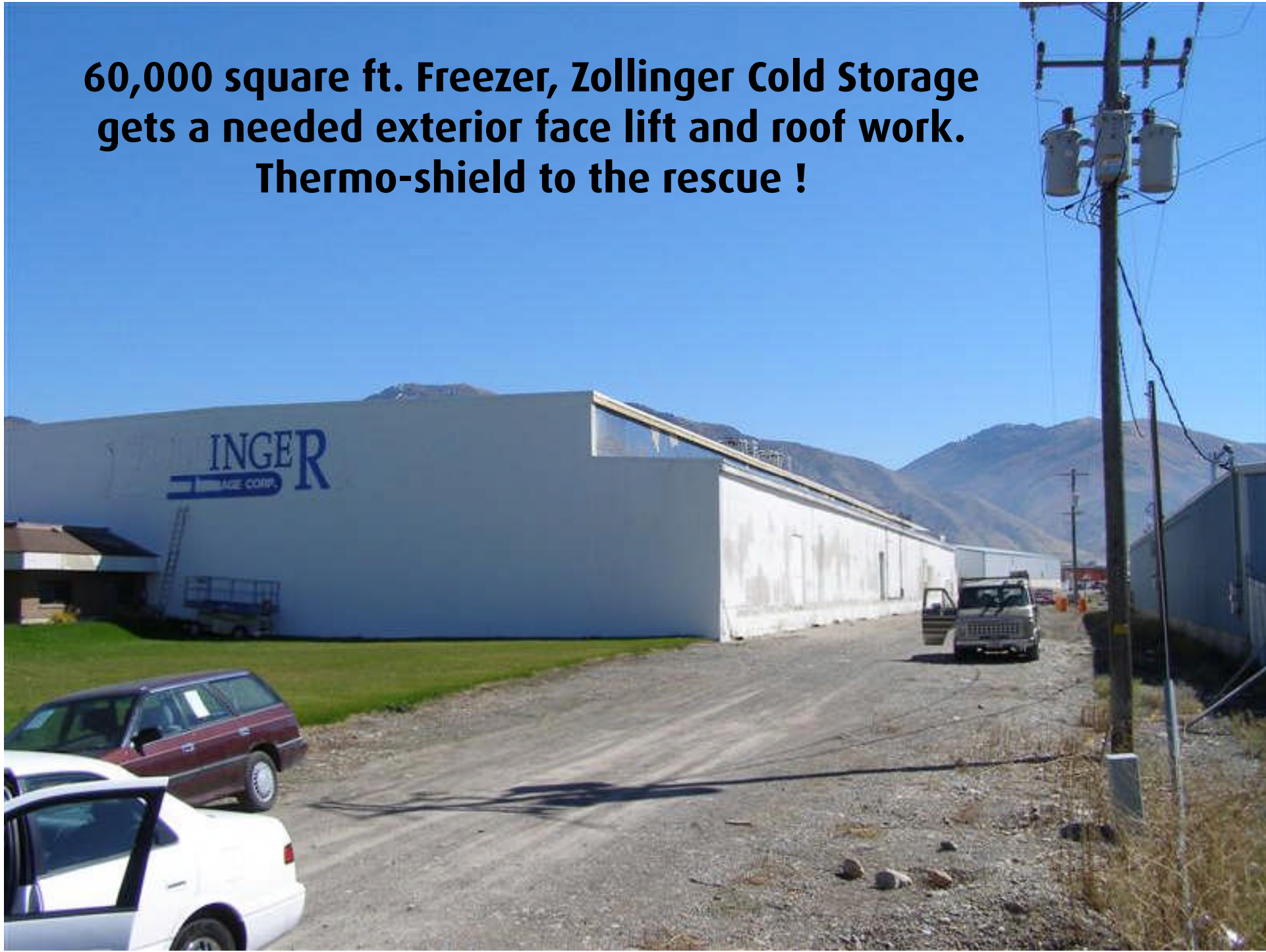


**60,000 square ft. Freezer, Zollinger Cold Storage gets a needed exterior face lift and roof work. Thermo-shield to the rescue !**







**Removing old loose “Texcoat” from concrete walls and power-washing surfaces to receive Thermo-shield**



**Finish treatment is failing in common trouble areas**







**Dripping  
water has  
got behind  
the cracking  
texture and  
caused this  
area of  
failure**

**South/West side**





**A pressure washer is used to remove old texcoat**





## **BEFORE**

**Project is a combination  
of concrete, block,  
wood, metal, etc.**



**Thermo-shield bonds to all these surfaces**

**AFTER**





**BEFORE**



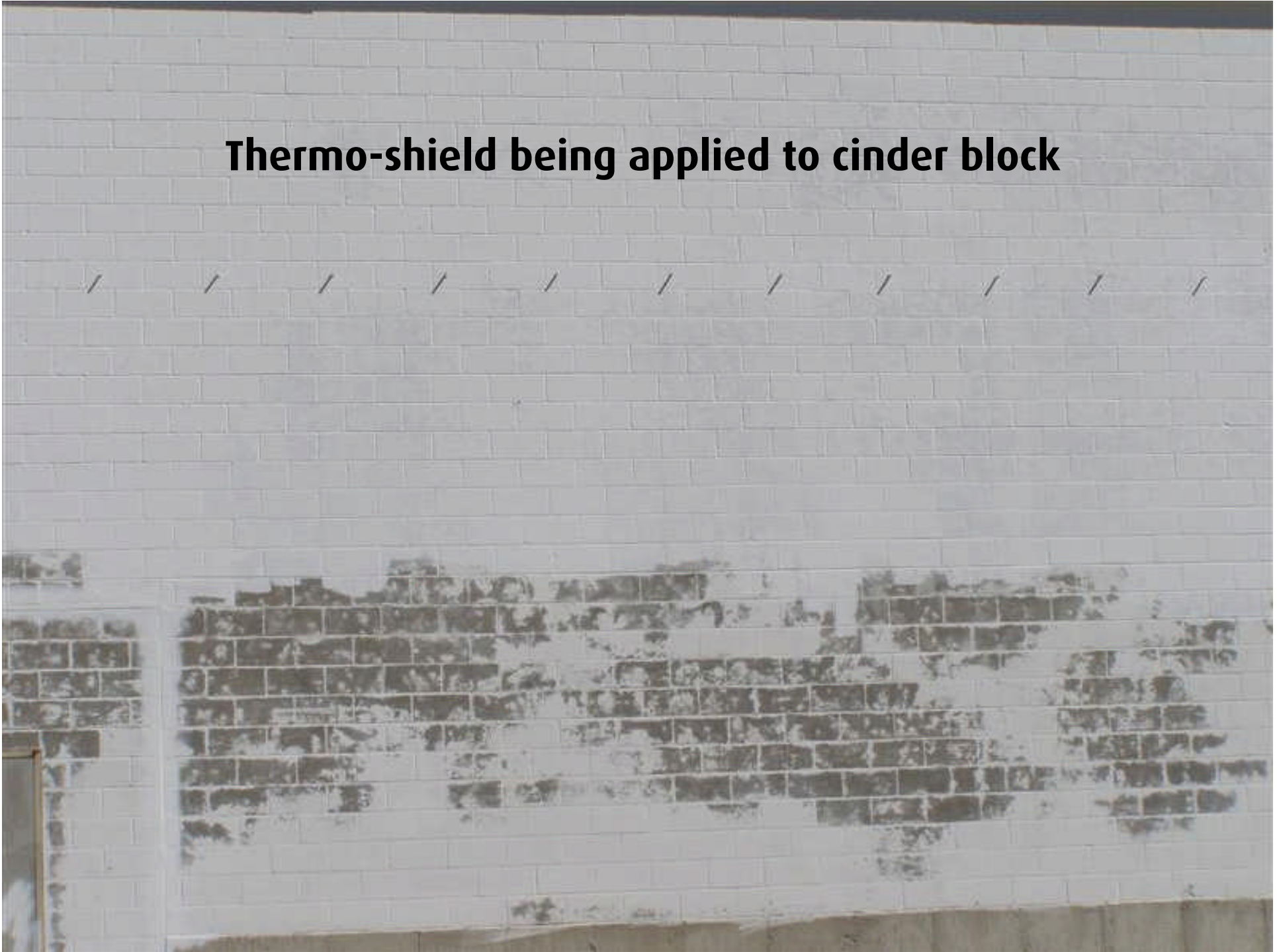
**AFTER**

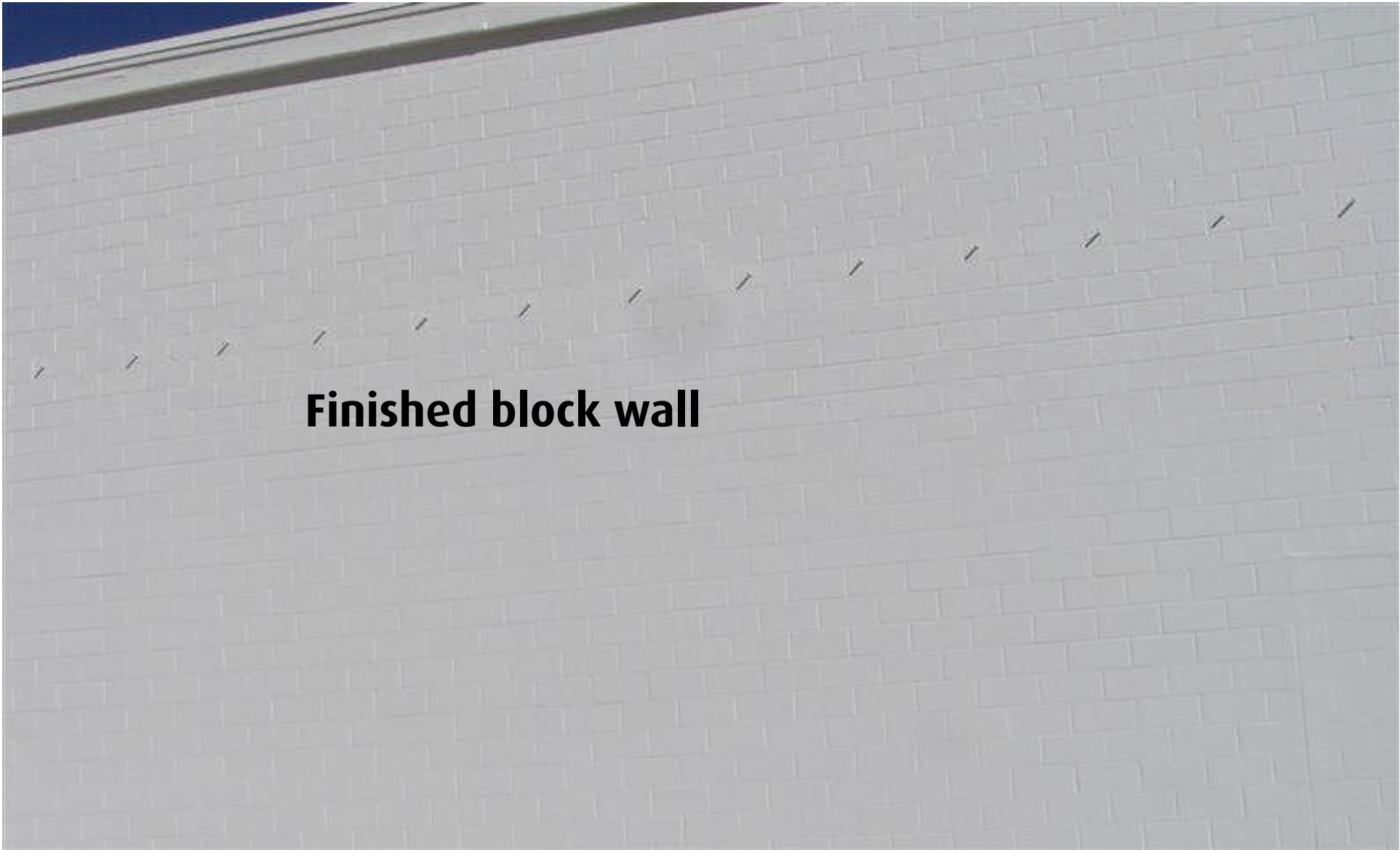
**Black areas are Flex Tac. Gravel has been removed and cleaned and Flex Tac applied to tar surfaces as bonding primer. When the Roof is applied, the walls, flashings, tie ins, and roof surfaces are all covered by a seam free, joint free, one piece surface**





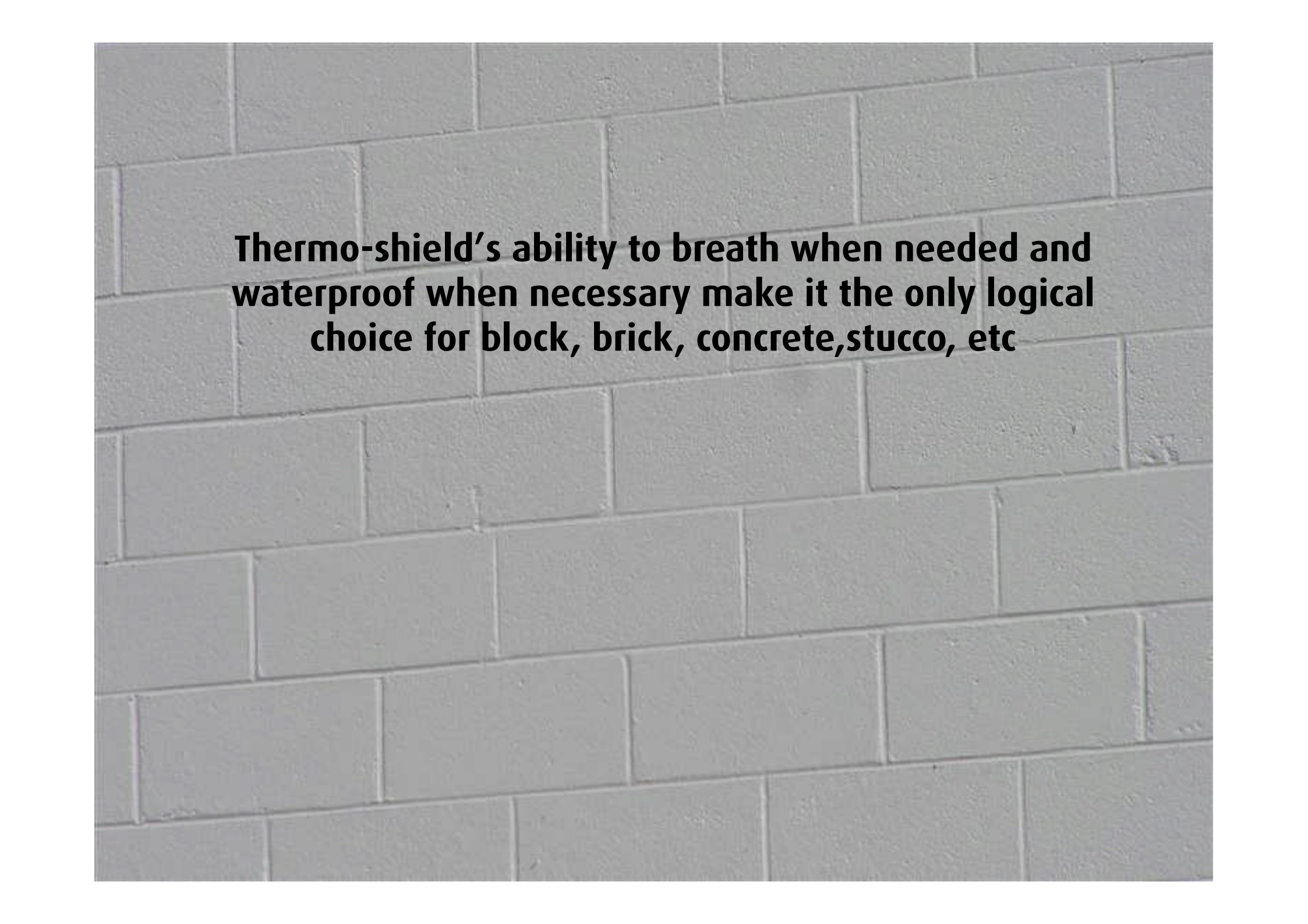
**Thermo-shield being applied to cinder block**





**Finished block wall**





**Thermo-shield's ability to breath when needed and waterproof when necessary make it the only logical choice for block, brick, concrete, stucco, etc**



**Tilt up concrete walls get fresh look with  
Thermo-shield Exterior**



A close-up photograph of a concrete wall. The surface is covered in a textured, light-colored protective coating. The texture is irregular and granular, with some vertical lines or grooves visible, possibly from the application process or the underlying concrete structure. The overall appearance is that of a weather-resistant or fire-resistant barrier.

**Close up of concrete wall with  
Thermo-shield protection**

**Before**





**After**

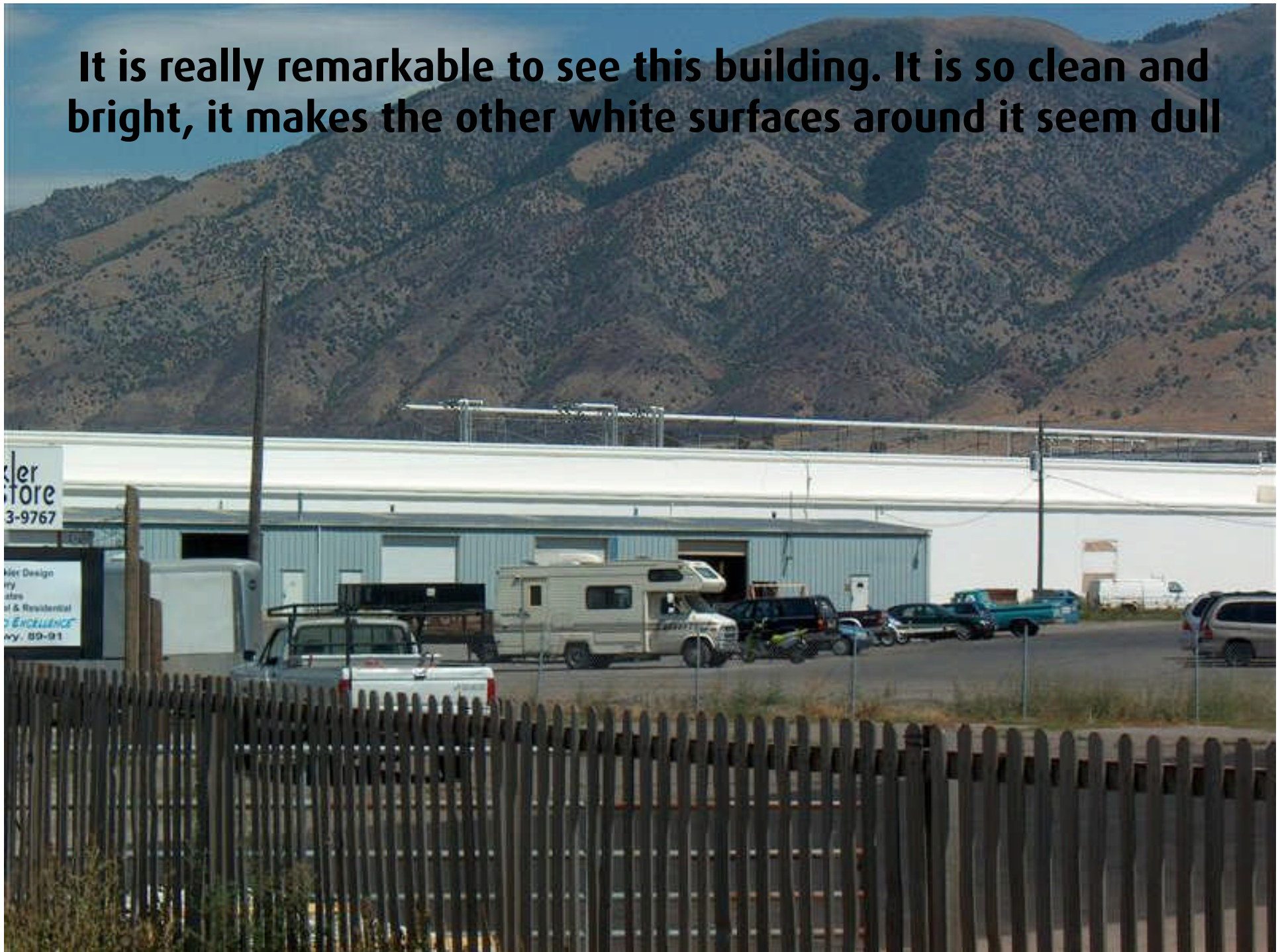




**Even the signage will stay bright and new in thanks to Thermo-shield Exteriors long lasting protection and fade fighting colors**



**It is really remarkable to see this building. It is so clean and bright, it makes the other white surfaces around it seem dull**



**Top deck wall has new white Thermo-shield**







**Look at this white compared to the Thermo-shield white**